

# LabReady<sup>®</sup> GBS

BY VAX-IMMUNE<sup>™</sup> DIAGNOSTICS

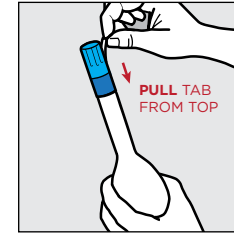
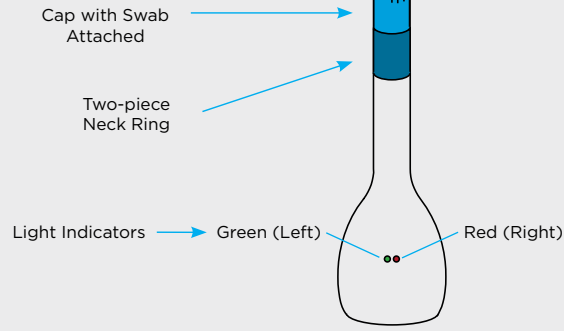
Quick Reference Guide  
for Healthcare Providers

## HEALTHCARE PROVIDER INSTRUCTIONS

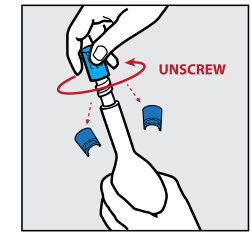
Before using, read entire Quick Reference Guide and Instructions for Use  
Instructions are also available at [www.vaximmune.com](http://www.vaximmune.com).

### COMPONENTS

The LabReady<sup>®</sup> GBS device is composed of the following parts:

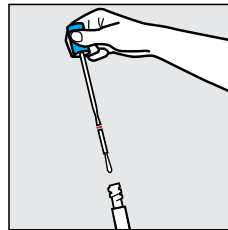


**1** Pull shrink wrap tab **from the top** of cap. NOTE: Do not pull tab with red strip at the bottom.

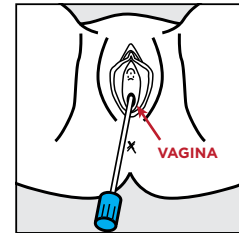


**2** Unscrew cap counterclockwise. Two-piece neck ring will disengage.

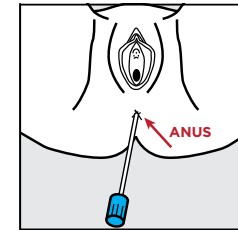
**WARNING:** Neck ring pieces will fall away; be prepared to collect.



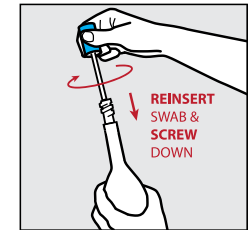
**3** Remove swab from device.



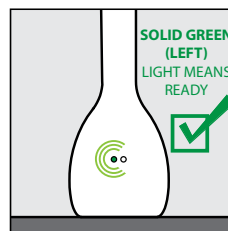
**4** Swab vagina.



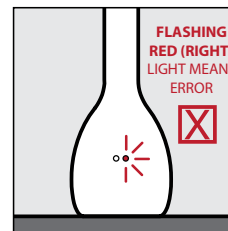
**5** Insert same swab into the ano-rectum through anal sphincter.



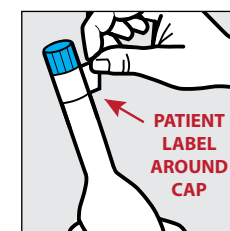
**6** Reinsert swab into device and screw cap until tight.



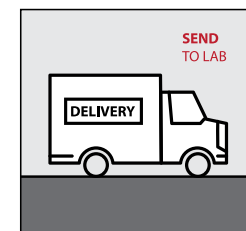
**7** **Solid green light** (left) indicates process has begun.



**Flashing red light** (right) indicates an error has occurred. If flashing red, discard unit and recollect sample from patient.



**8** Place patient label around cap of device.



**9** Transport device at 2-37°C to the laboratory for testing within five days.

END OF INSTRUCTIONS